



**Mobility, Simplicity,  
and Reliability**

**MEDRAD® Salient**  
Contrast Injection System

# Clear Direction With MEDRAD® Salient

The MEDRAD® Salient Single System has been engineered to combine innovation and mobility in order to bring simplicity and reliability to your suite.



## Simplicity

- Intuitive, icon-driven interface
- Flexible workflow and software architecture
- Single-action syringe loading
- Easy installation
- Battery operation for total mobility



## Reliability

- Allows dependable, reproducible flow rates and pressures that can consistently deliver injection protocols
- Provides a maximum pressure up to 300 psi and up to 10 mL/s
- Enables accurate and repeatable contrast administration with power injection<sup>1-3</sup>



## Your Partner for Radiology

Salient can support a wide range of procedures, including contrast-enhanced mammography (CEM).



Salient Workstation



## Versatility in Your Suite

The straightforward design of Salient offers flexibility for your daily operations.

- › Cordless configuration:

  - Helps keep floor free of cords for a safer clinical environment
- › Compact design:

  - Enhances mobility
  - Enables easy transport and storage
- › Extensive applications:

  - Easily performs CT protocols
- › Customized protocols:

  - Allows customized protocols – up to six phases
  - Saves up to 20 customized injection protocols





## Additional Tools for Enhanced Efficiency

In addition to Salient, Salient Single can be further customized to meet your needs with the following:

- Wireless control room monitor
- Available scanner interface: ISI2
- Protocol Assistant Tool (PAT)
- Salient and Ultravist® (iopromide) have indications for X-ray diagnostic procedures, including CEM\*.



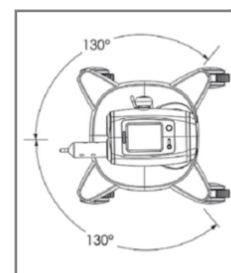
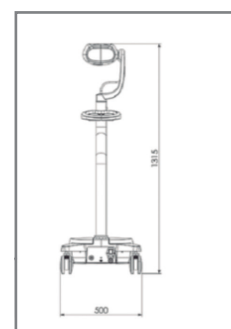
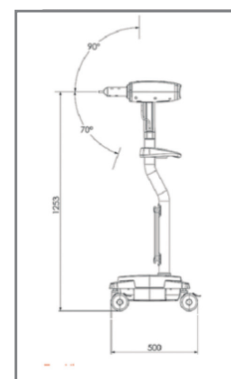
\*Check local labeling



## Main Features and Benefits



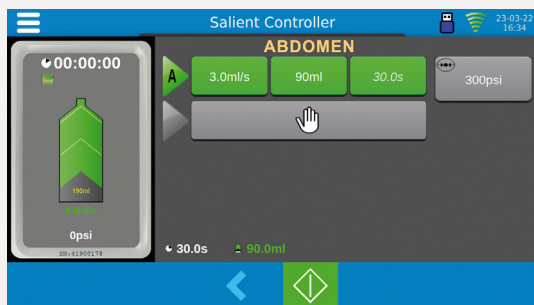
## Dimensions



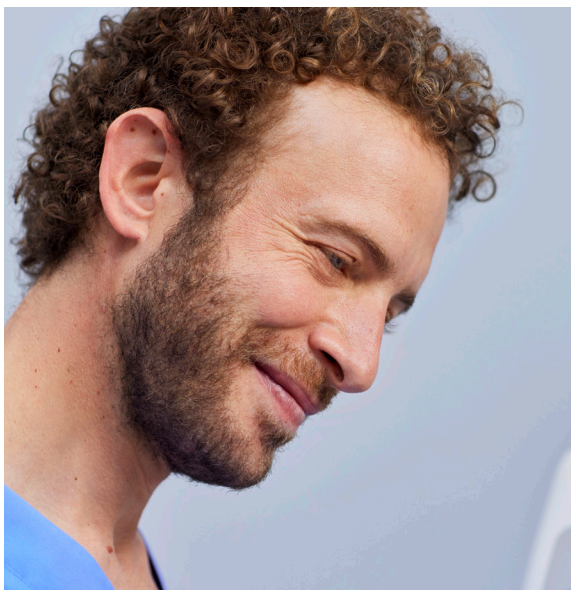


## Bayer Is Your Partner

MEDRAD® injectors can support you in achieving diagnostic image quality for your patients and workflow efficiency in your procedures.



- The Protocol Assistant Tool (PAT) allows you to deliver customized contrast media protocols to your patients for many common CT examinations.
- PAT is populated with UV370 and 300 to help add efficiency and confidence to your workflow.
- Our Service and Applications Specialists provide quality service and solutions to meet your clinical, financial, and operational needs.
- To learn more about MEDRAD® Salient Single and other Bayer products, please speak to your local representative.



## MEDRAD® Salient Technical Specifications

### Functional

Maximum pressure	300 psi
Flow rate	0.1 to 10 mL/s
Maximum volume	190 mL
Multi-phase protocols	Up to six phases. Storage for 20 different named protocols
Manual fill rate	Up to 10 mL/s
Auto fill rate	Up to 10 mL/s

### Controls

Base	Line power, IEC inlet, on/off switch
Head	5.7" LCD touch screen, arm button, on/off soft switch
Infrared remote control	Inject start/stop

### Mechanical

Weight	22.9 kg (Single)
Height	1315 mm
Floor area	500 mm x 500 mm
No. of wheels	4 casters, all individually locking

### Electrical

Line voltage	100 – 230 VAC
Line frequency	50/60 Hz
Battery operation	Dual batteries, sealed lead acid
Mains power operation	Simultaneous operation and battery charging
Contrast heat maintainer <i>(one (1) included)</i>	37°C +/- 4°C, 5W

### Ordering Details

PART NAME	PART NO.
Salient Single Injector	DC009S
Salient Single Injector With Remote Control Unit	DC009SW
Scanner Interface Box <i>(optional)</i>	ISI2
Connector Tubing Single <i>(box of 50)</i>	ZY5151
Syringe With Quick Fill Tube <i>(box of 50)</i>	ZY6322
Syringe With Fill Spike <i>(box of 50)</i>	ZY6323
Syringe With Fill Spike, Single LPCT <i>(box of 50)</i>	ZY6324
Syringe With Quick Fill Tube, Single LPCT <i>(box of 50)</i>	ZY6325
Heat Maintainer <i>(one (1) included)</i>	DC022
Operation Manual – Multilanguage CD <i>(one (1) included)</i>	MN040015



References:

1. Endrikat J, Barbati R, Scarpa M, Jost G, Ned A. Accuracy and Repeatability of Automated Injector Versus Manual Administration of an MRI Contrast Agent – Results of a Laboratory Study. Invest Radiol. Jan 2018;53(1):1–5.
2. McDermott M, Kemper C, Barone W, Jost G, Endrikat J. Impact of CT Injector Technology and Contrast Media Viscosity on Vascular Enhancement: Evaluation in a Circulation Phantom. Br J Radiol. May 1 2020;93(1109):20190868.
3. Jost G, Endrikat J, Pietsch H. The Impact of Injector-Based Contrast Agent Administration on Bolus Shape and Magnetic Resonance Angiography Image Quality. Magn Reson Insights. 2017;10:1178623x17705894.

Bayer reserves the right to modify the specifications and features described herein or to discontinue any product or service identified in this publication at any time without prior notice or obligation. Please contact your authorized Bayer representative for the most current information.

The patient data that appear in this document are fictitious protected health information (PHI) and/or actual PHI from which all personally identifiable information (PII) has been removed or otherwise anonymized. No personally identifiable information is shown.

Bayer, the Bayer Cross, MEDRAD Salient, MEDRAD, and Salient are trademarks owned by and/or registered to Bayer in the U.S. and/or other countries. Other trademarks and company names mentioned herein are properties of their respective owners and are used herein solely for informational purposes. No relationship or endorsement should be inferred or implied.

© 2025 Bayer. This material may not be reproduced, displayed, modified or distributed without the express prior written consent of Bayer.

**See the Possible. Create the Future.**

> BAYER IN RADIOLOGY



**Bayer A/S**

Arne Jacobsens Allé 13  
DK-2300 København S  
Danmark

more info on:  
[www.radiology.bayer.dk](http://www.radiology.bayer.dk)



**Manufacturer**

Bayer Medical Care Inc.  
1 Bayer Drive  
Indianola, PA 15051-0780  
U.S.A.  
Phone: +1-412-767-2400  
+1-800-633-7231  
Fax: +1-412-767-4120



**Authorized European Representative**

Bayer Medical Care B.V.  
Avenue Céramique 27  
6221 KV Maastricht  
The Netherlands  
Phone: +31 (0) 43-3585602  
Fax: +31 (0) 43-3656598

